

Infinity™ SPE

*Solid Phase Extraction (SPE) and
Liquid Solid Extraction (LSE) Cartridges*

Infinity SPE cartridges replace Liquid-Liquid Extraction (LLE) for many analytical applications

Superior high-solids flow performance

The Infinity™ SPE Cartridge was developed to simplify and **accelerate sample preparation, increase lab throughput, and reduce costs.**

The Infinity SPE/LSE cartridges are formulated to satisfy EPA method 3535A and all affiliated methods including those which call for C18 and DVB cartridges. This list includes the 500 and 1600 method series.



Infinity LSE/SPE Advantages over Liquid-Liquid Extraction

- **Speed** - Prepare a dozen samples in 1 hour
- **Safety** - Eliminate dangerous venting of solvents
- **Efficiency** - Run high TSS samples without clogging
- **Cost** - Minimal use of solvents, save on disposal
- **Environment** - Reduce contaminated waste

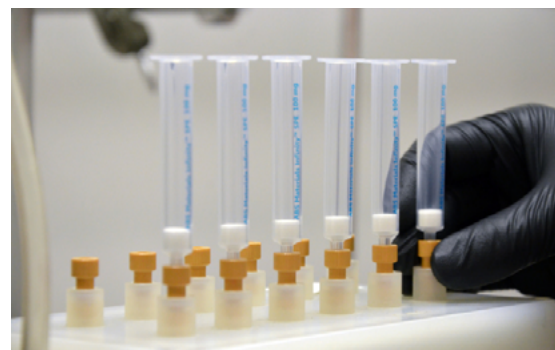
Infinity LSE/SPE Advantages over Standard LSE/SPE Cartridges

- Fastest cartridge available
- No clogging when running high TSS samples
- No pre-filtration step required
- Not blinded by organic matter
- Maximize lab throughput

Compliant with EPA methods specifying C18 & DVB Ideal for high TSS Samples

The Infinity SPE cartridges work with most standard lab equipment and are particularly recommended for analysis of difficult samples such as:

- **Wastewater**
- **Beverages, e.g. beer, milk, juices**
- **Drug analysis in urine**



**Advanced absorbent solutions for
sample preparation and processing**

www.absmaterials.com
info@absmaterials.com
330.234.7999

Performance of Infinity SPE cartridges with high solid samples versus leading competitors

Infinity SPE Cartridges processed the entire sample in less than 20 minutes and did not clog. Both competitors failed to run the one liter wastewater sample and clogged.

When processing samples, Infinity SPE Cartridges are much faster than leading competitors (20 mins vs hours).

See the Media Capture Chart at www.absmaterials.com/technical-resources.aspx for a list of compounds captured by the Infinity SPE Cartridge.

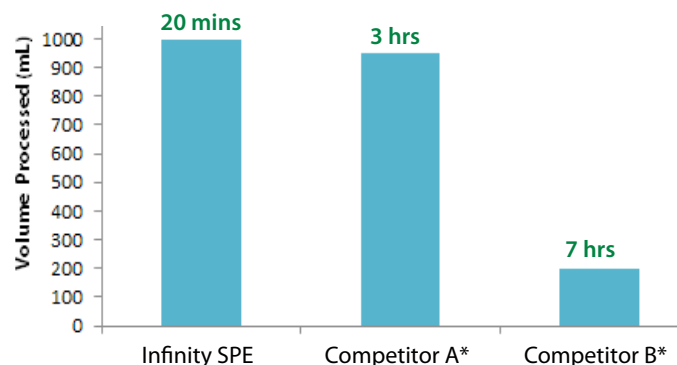


To order, visit our webstore or Amazon.com

For additional information go to:
www.absmaterials.com or call (330) 234-7999

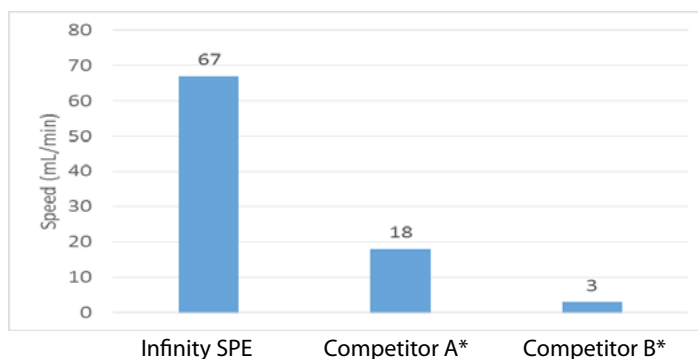
	Media Bed	Capacity	Quantity
Infinity SPE	100 mg	3 mL	54 pcs/pkg

Infinity SPE Completely Processes Samples with No Pre-Treatment Step Necessary



The Infinity SPE cartridge was compared to two widely used cartridge types by running a 1 liter sample of ASTM D5905 substitute wastewater (apx. 2,200 mg/L total solids) without pre-filtration. **Sample Volume:** 1000 mL. **Sample Matrix:** 800 mL wastewater, 200 mL D5905 substitute wastewater. **Analyte Concentration:** 0.1 ug/mL THC, 0.1 ug/mL EPA 625 mix. **Elution Solvent:** Methylene Chloride. **Analysis Mode:** GCMS (SIM). Note: *Cartridges clogged before total volume was passed through.

Infinity SPE Performs Faster Than Leading Competitors, Even on Samples with Low to No TSS



The Infinity SPE cartridge was compared to two widely used cartridge types by running a 1 liter sample of deionized water. **Competitor A:** 100 mg/3 mL Tube w/ DVB based media. **Competitor B:** 500 mg/3 mL Tube w/ C18 based media. **Sample Volume:** 1000 mL. **Sample Matrix:** 1000 mL DI water, zero TSS solids. **Vacuum:** 20 in Hg.

Infinity SPE Captures Wide Range of Compounds Efficiently

